

Hollowford 2022



Wed 22nd – Fri 24th June



The Centre

- Ensuite rooms of 3-6
- Group room
- Small shop opens at teacher's request
- Duty member of staff overnight
- Healthy, freshly cooked food



Safety

- AALA licence (Adventure Activities Licensing Authority)
- Qualified & Experienced Instructors in a wide range of activities
- Excellent safety record
- All specialist equipment supplied from stores
- 60+ years experience



Activities

- Canoeing
- High Ropes
- Rock Scrambling
- Raft Building
- Archery
- Hill walk





Sleeping Arrangements

- Dorms of three – six
- Staff present at all times
- Children are responsible for their rooms and making their own beds!
- Friendship groups



Food

- Canteen
- Choice available
- Responsibilities
- Packed lunch on the first day

Behaviour

- High standards of behaviour are expected as they are in school

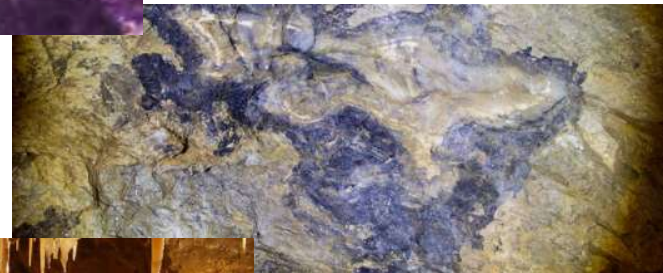
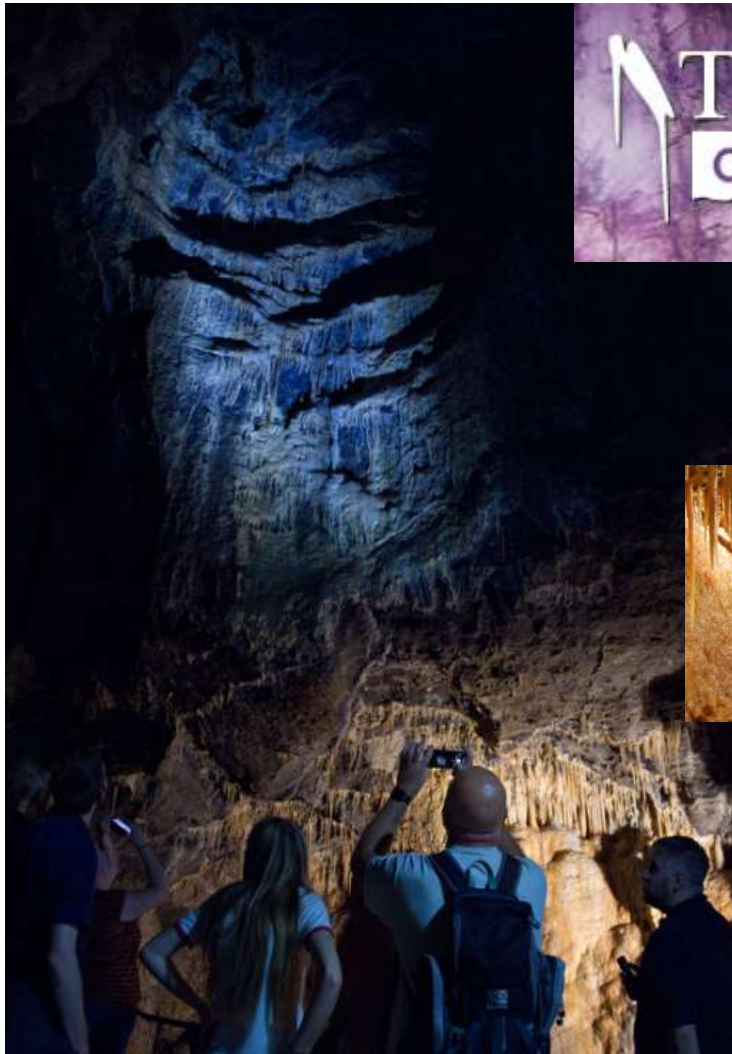
Medication

- Kept by St Wilfrid's staff
- Medical forms
- All information will be shared nearer the time

Equipment

- Old clothing
- Footwear – at least 2 pairs
- Walking boots and waterproof jackets available to borrow
- Tuck shop/Souvenirs £5
- Further details nearer the time

Treak Cliff Cavern Visit



Total Cost

- £255.00 (approx - this includes coach hire, activities and instructors, food and board, Treak Cliff)
- £60 deposit due by Friday 3rd December – on ParentPay
- Payment can be made monthly to spread the cost
- Full balance due Friday 20th May

Hollowford 2022



Wed 22nd – Fri 24th June